



— *Making a difference, together* —

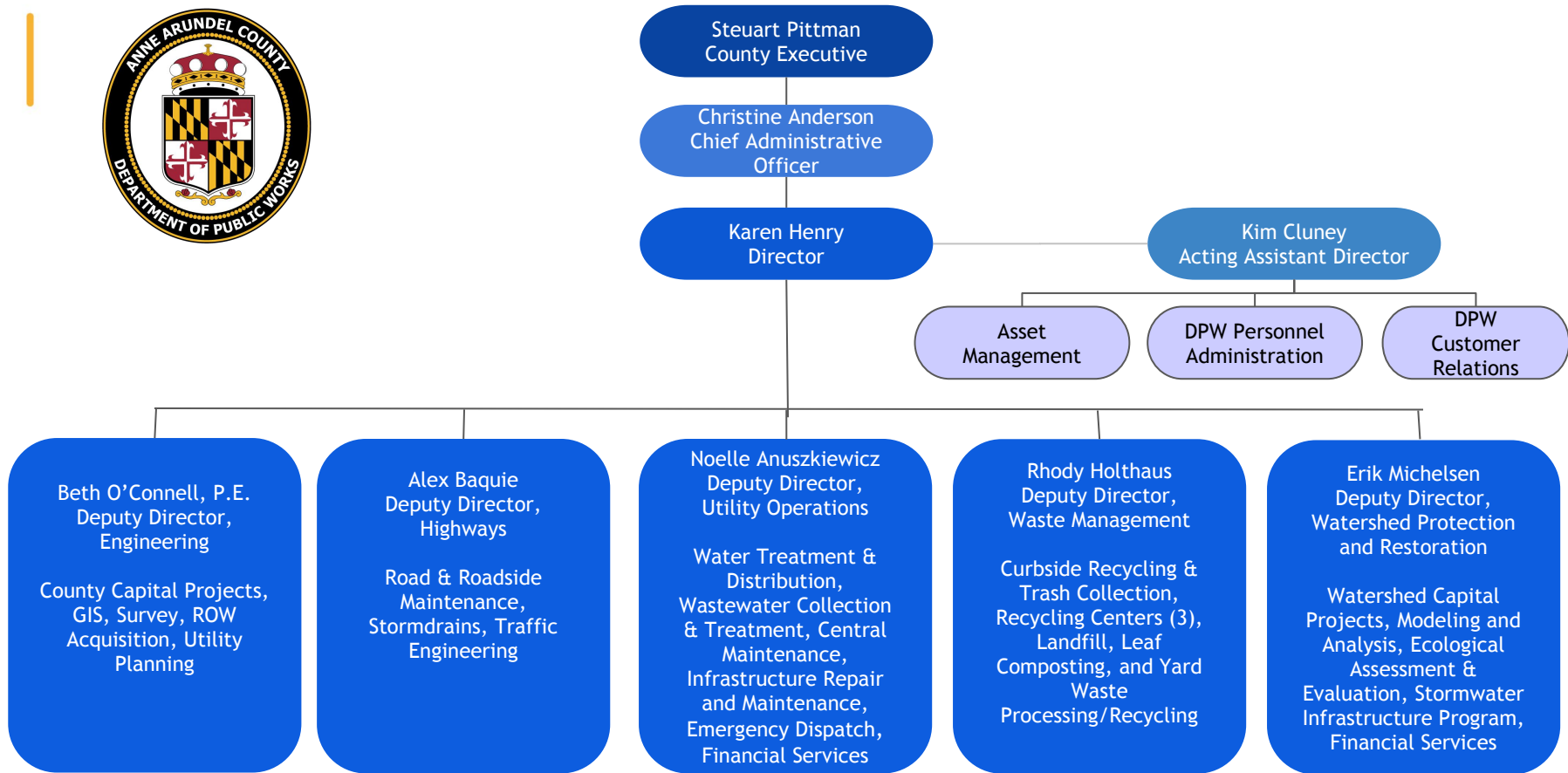
Greater Severna Park Council

June 13, 2023

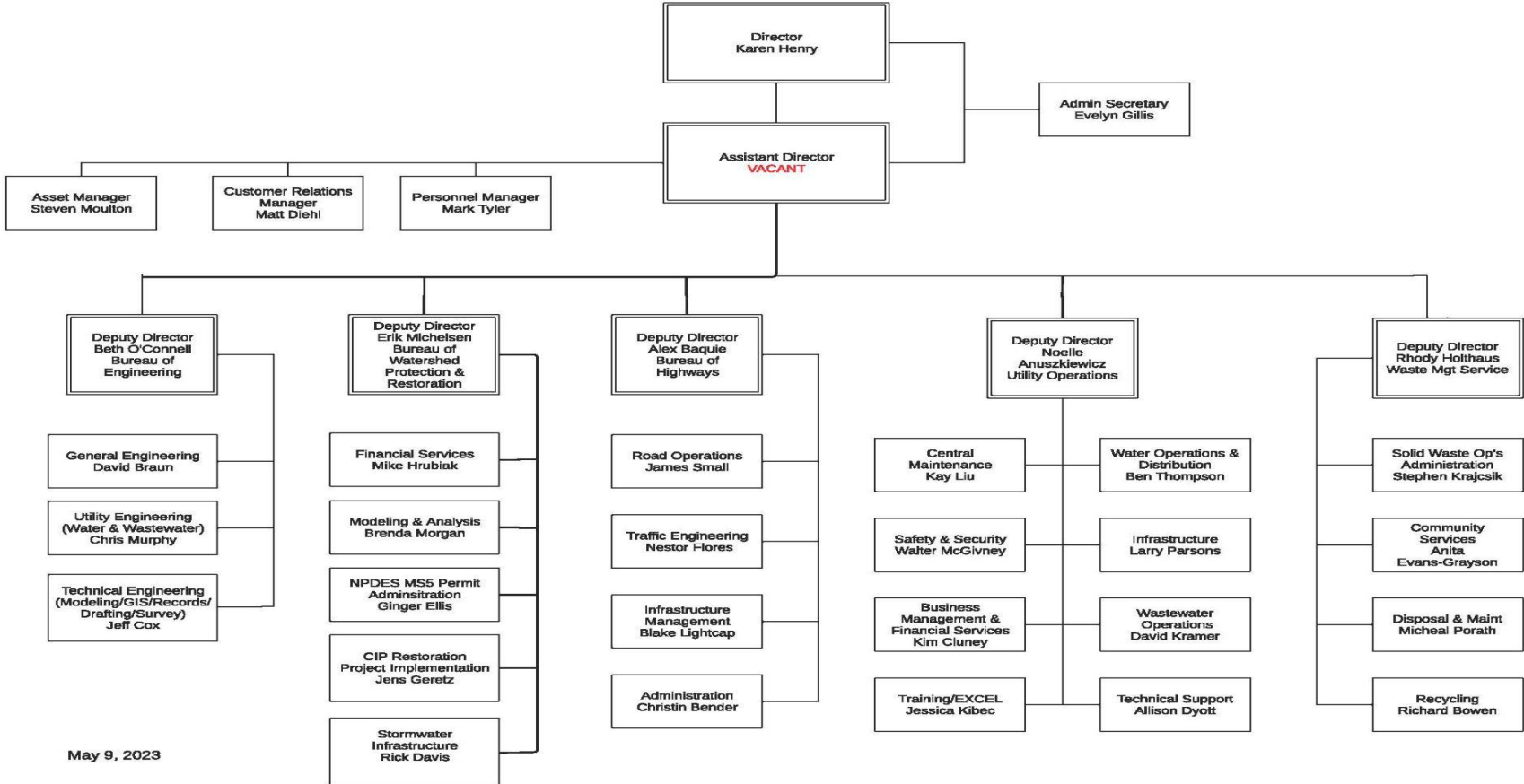


DPWandYOU.com | *Making a difference, together*





DEPARTMENT OF PUBLIC WORKS



Jumpers Hole Road - Benfield to Kinder Project

Current schedule

- Complete 60% design in Fall 2023
- Next community meeting anticipated this fall following review of the 60% design

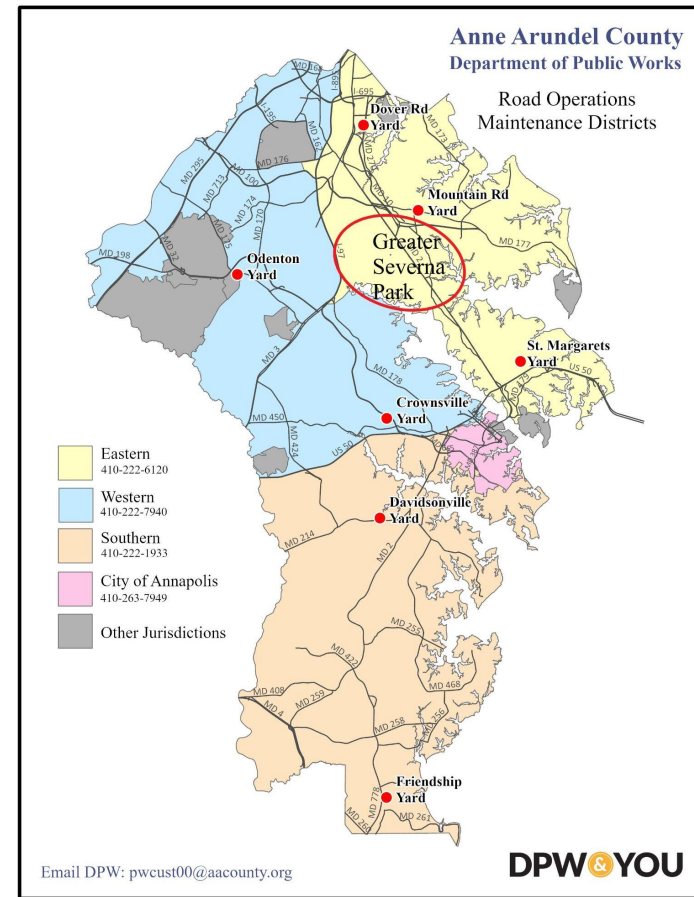
Improvements include:

- Shared use path along the west side
- Sidewalk along the east side
- Bike lanes along the road

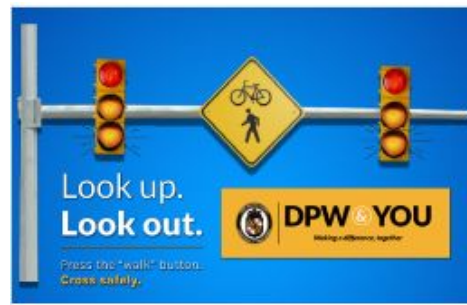


Road Ops Redistricting

- Maintenance District Geographic Adjustment
 - Central = Western (Severn/I-97/I-895 divide)
 - Northern = Eastern (add St. Margaret's Yard)
 - Southern = Southern
- Greater Severna Park - No Impact
 - Same contact number
 - Same familiar maintenance staff
 - Same snow removal service



Robinson Road

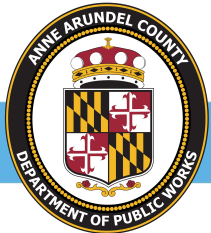


Robinson Road Pedestrian Crossing Signal

Click here to learn more about the newly enhanced pedestrian crossing location at the intersection of Robinson Road and the Baltimore Annapolis Trail in Severna Park.



- Recently activated the pedestrian signal at Robinson Rd/B&A Trail.
- Coordinating with the County Police to hand out flyers and remind trail users of the proper use of the pedestrian signal.
- Future - will be adding one more piece of equipment to the signal to provide "passive" detection for pedestrians and bikes. With passive detection, the pushing of the pedestrian button is optional.

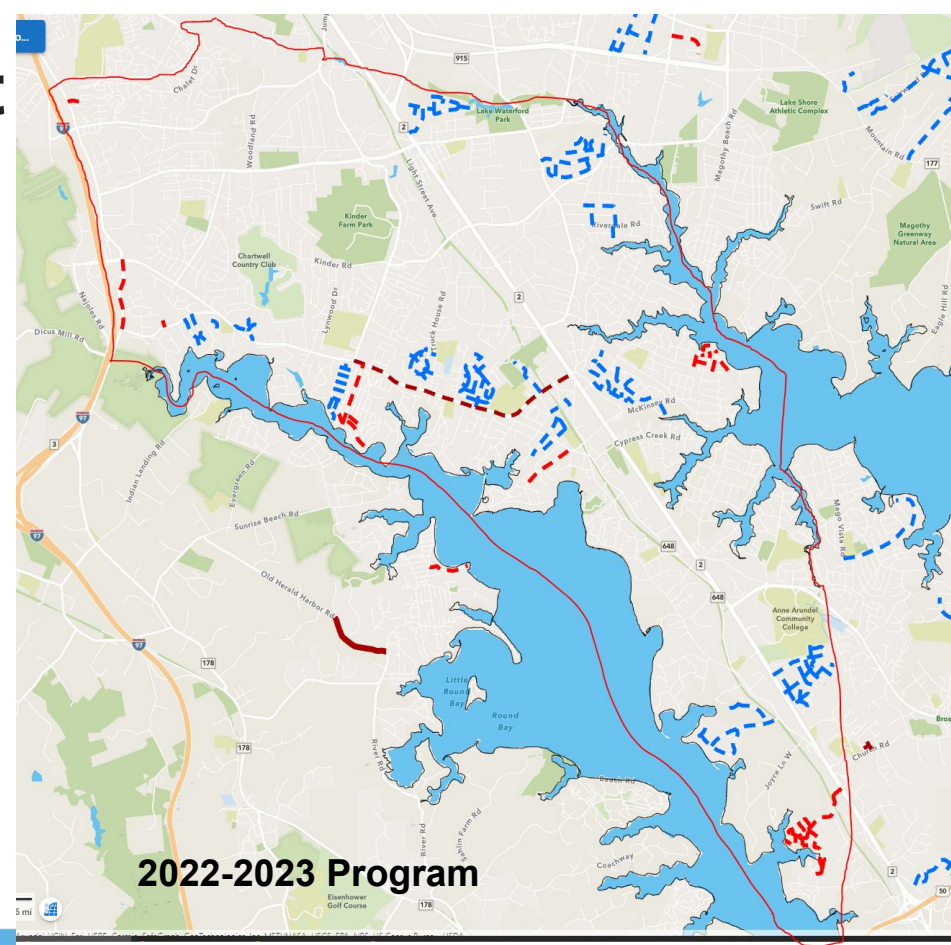


Pavement Management Web Map



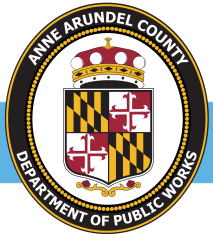
Pavement Management Program Web Map

View road inventory information including Pavement Condition Ratings and Pavement Program projects.



DPWandYOU.com | *Making a difference, together*

DPW & You: Making a Difference, Together



DPWandYOU.com | *Making a difference, together*



DPW & You: Ways to Help

- Potholes: Report via See Click Fix or calling 410-222-7321
- Leaks: Report suspected water or sewer leaks 24/7 to Dispatch at 410-222-8400
- Yard Waste Delays: Leave it out and collections will be completed as soon as possible
- Recycling: Download the “Recycle Coach App”, has tips on what the recycle
- Sewer System: Don't flush wipes down the pipes
- Slow down when driving near roadside crews



DPWandYOU.com | *Making a difference, together*





Bureau of Utility Operations

24-Hour Emergency

Water Service: (410) 222-8400

Billing Inquiries: (410) 222-1144



Bureau of Waste Management Services

Bulk Trash Service / Curbside

Collections: (410) 222-6100



Bureau of Highways

General Inquiries: (410) 222-7321

Snow Line: (410) 222-4040

Email: hwyscustomercare@aacounty.org



Bureau of Engineering

General Inquiries: (410) 222-7500



Bureau of Watershed Protection and Restoration

General Inquiries: (410) 222-1072

Customer Relations:

(410) 222-7582



DPWandYOU.com | *Making a difference, together*



Follow DPW



@annearundeldpw



@AACoDPW



@annearundelcountypw



@Anne Arundel County DPW



@Anne Arundel County
Department of Public Works



DPWandYOU.com | *Making a difference, together*



